



cavalli

TOWER

SUPER
Luxury

DAMAC

WHERE FINE
LIVING HAS
A NEW
point of view

Eclectic design. Priceless innovation.
Bold, beautiful and always unforgettable.

cavalli
TOWER



PRESENTING CAVALLI TOWER

Overlooking the Palm and crafted to take your breath away, this architectural masterpiece is exclusively for the discerning few. This is where iconic experiences abound in a 70-storey luxury tower calling for those who live life, limitless.

Cavalli Tower is conceptualised by Shaun Killa, award-winning architect and design partner at Killa Design, whose list of achievements was most recently topped by the extraordinary Museum of the Future on Sheikh Zayed Road, Dubai.

- The only Cavalli-branded tower in the world
- Front-facing designer apartments with beach access
- 24/7 views of the Palm, Burj Al Arab and Dubai skyline
- Unrivalled water features including artificial beach & private pools
- Access to the Westin Mina Seyahi private beach, waterpark membership and 25% discount on F&B



cavalli
TOWER





WHERE THE WORLD IS AT YOUR DOORSTEP

Located along the western coast of Dubai, Al Sufouh is a high-profile neighbourhood in Jumeirah. It stretches across 7 square kilometres towards the north-western side of Dubai Marina with the other end hemmed by Dubai Internet City, Dubai Media City and Dubai Knowledge Village and headquartered by some of the world's largest corporations.





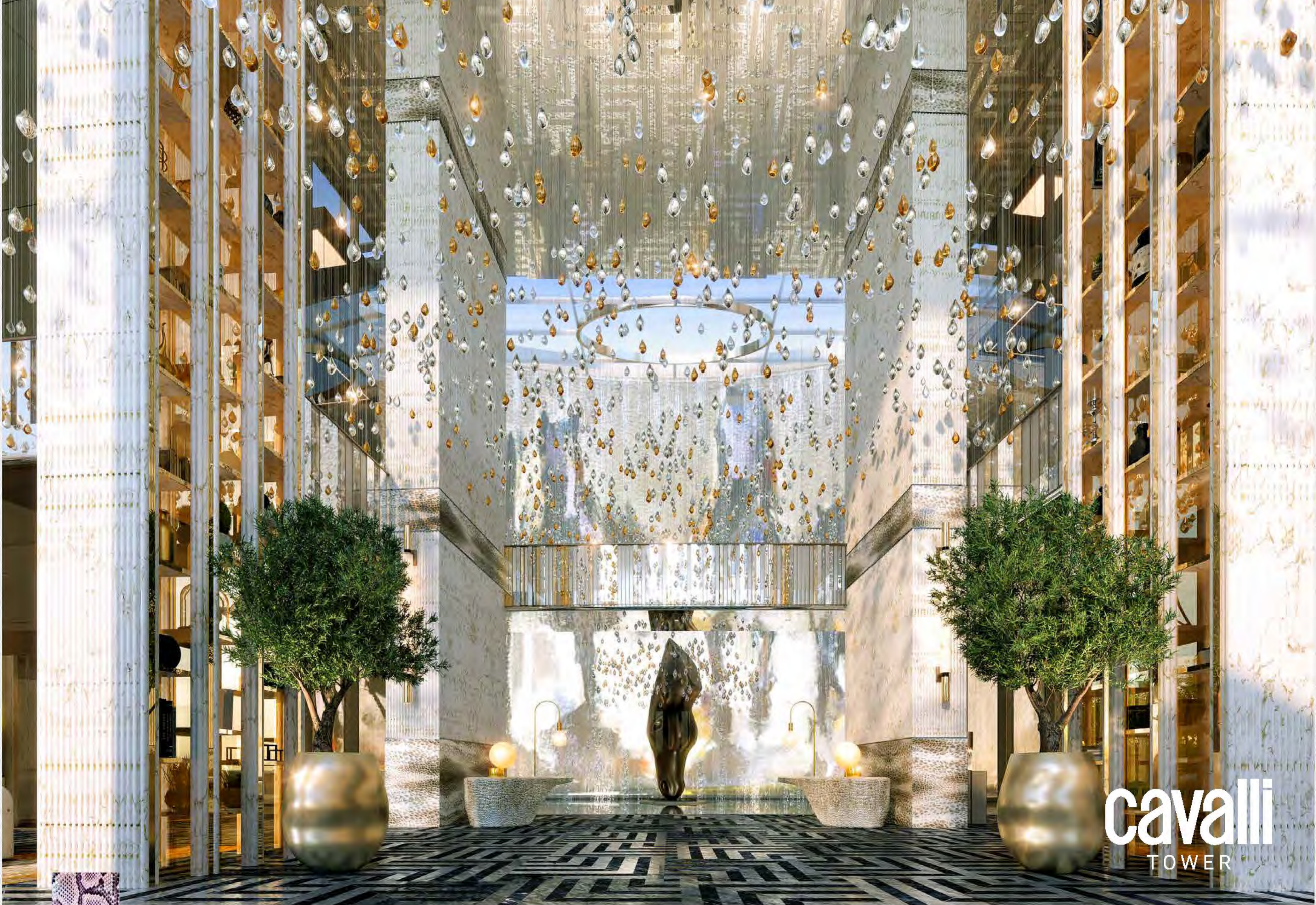
GRAND LOBBY



WHERE SPLENDOUR MAKES A GRAND ENTRANCE

Step into opulence as the spectacular four-storey high lobby ladders up to a dazzling skylight.

Arrive to the calm aura of an indoor waterfall and the accompanying water features all around this elegant space. It's little surprise that the Cavalli Tower experience makes a lasting impression from the very first moment.



cavalli
TOWER





JET ELEVATORS

WHERE GOING UP IS A NEW HIGH

Take in breathtaking views of the Palm Jumeirah from one of six exclusive panoramic jet elevators that glide through the creative Cavalli Tower cut-outs, giving you a rare vantage point of stunning sea views.





PRIVATE BEACH

D A M A C P R O P E R T I E S



C A V A L L I T O W E R

WHERE THE WAVES COME TO YOU

Make time to soak up the sun and take in the breeze, all without ever leaving home. Slip into your flip flops and amble across to the 900-square metre beach pool with pop-up F&B service, making it the perfect spot when the sun goes down.



WHERE NATURE FLOATS ON AIR

Reserve your table for a rare dining experience served up by signature chefs at live cooking stations, just by the sky pool at level 58. All of it while the light floods onto the carefully curated sky garden, adding to a richly gratifying ambience.



WHERE SMALL PLEASURES ARE LARGER THAN LIFE

It's a celebration of the good health of mind, body and soul. Explore a dedicated wellness area on level 24 with a fully-equipped juice bar and landscaped sections that come together in an inimitable zen space with views of the Dubai horizon to behold.

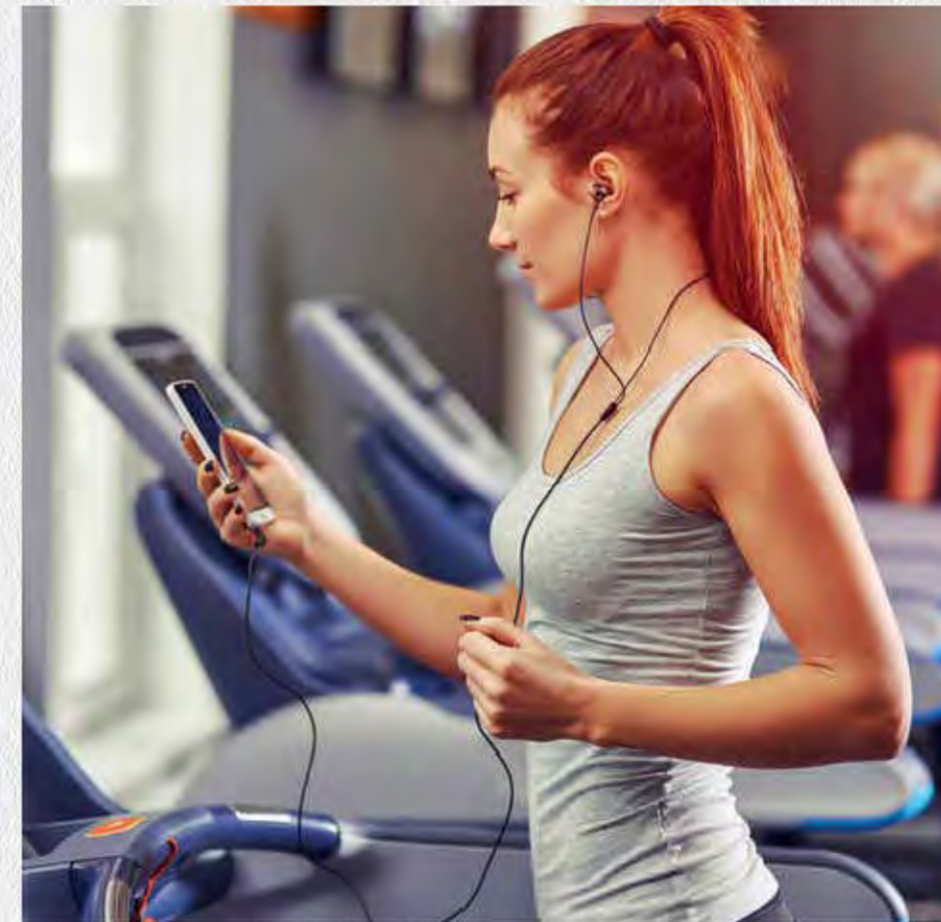




DINING & LEISURE

WHERE THE FINER THINGS GET BETTER

Ready to plan your day with a pleasant mix of everything you enjoy most? Slate in a morning workout at the state-of-the-art gym or get in a game or two at the tennis and paddle tennis courts. Make an appointment for some down-time with a pampering session at the spa or look forward to your choice of cafés and restaurants, all while the little ones have a blast at their own playground.





THE APARTMENTS

D A M A C P R O P E R T I E S



C A V A L L I T O W E R

WHERE HIGH FLIERS TOUCHDOWN IN STYLE

Come home to impeccable style with Cavalli interiors, a tribute to exquisite finishes and bold designs that reflect an elevated way of life. From the lobby to the living spaces, every inch is a true testament of taste – with high ceilings and rich details.

The front-facing apartments feature flexible kitchens fitted with artwork wall separations that transform your living room into a space to entertain your discerning guests. Also on show are lush bathrooms and bedrooms with free standing bathtubs and glass operable partitions.









PRIVATE
POOL

D A M A C P R O P E R T I E S



WHERE
MOMENTS
BECOME
LANDMARKS

Splash pools have never been this inviting. From poetic moments of quiet reverie to fun-filled evenings with the family, look forward to the gift of experiences aplenty, all from the comfort of home.



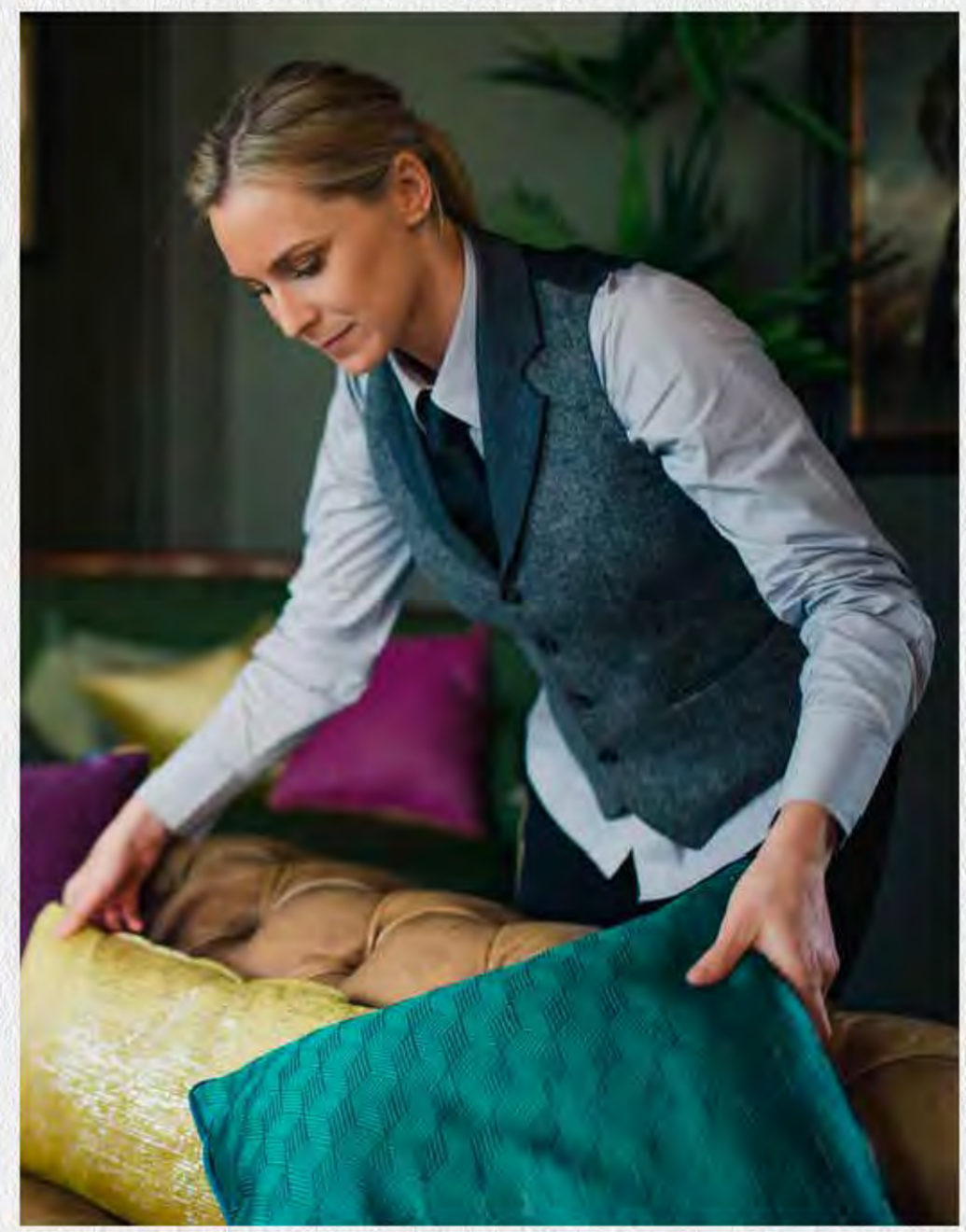


BESPOKE SERVICES

WHERE LUXURY IS YOURS FOR THE TAKING

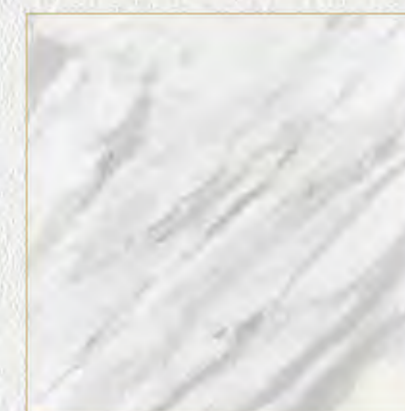
No matter what you're looking for, home has it all. From housekeeping and butler services to party planning and more, everything you need is exactly where you are.

- 24-hour Butler
- Housekeeping (à la carte)
- Babysitting
- Personal Trainer
- In-room Spa Treatment
- Valet Laundry
- In-room Chef Services
- Apartment Styling
- In-room Gardening
- Event Planning
- In-house Nurse

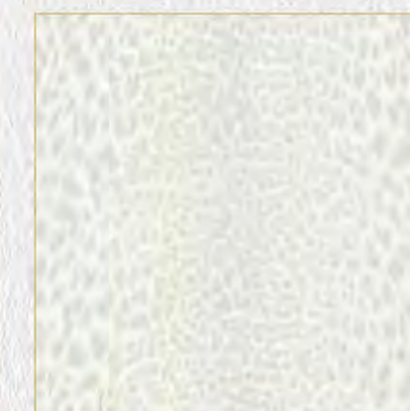




LIVING / DINING FINISHING MATERIAL



Flooring
High end Volakas Marble
or equivalent



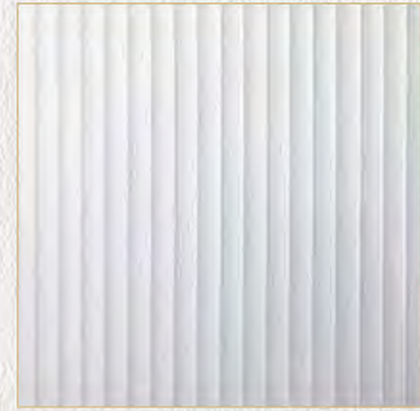
Wall
Panelling with feature
wallpaper and metal trim
highlights



BATHROOMS FINISHING MATERIAL



Fittings
Brand Newform or equivalent, copper bronze finish



Bathroom partition
Fluted glass panel with copper bronze finish highlights



Vanity
Porcelain Machi Vecchia look or equivalent



Joinery
Fitted cupboards with faux-leather finish



Sanitaryware
Brand Geberit or equivalent



Flooring
High end Carrara Marble or equivalent mosaic pattern





BEDROOMS FINISHING MATERIAL



Wardrobes
Fitted wardrobes with fluted clear glass panels and metal trim highlights



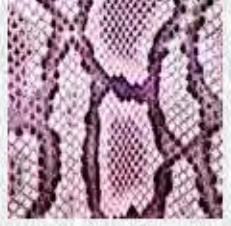
Flooring
Timber Oak wooden floor or equivalent



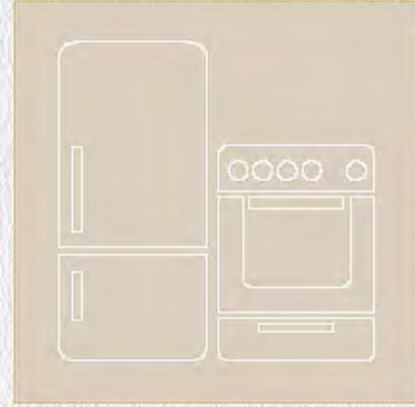
WALL
Feature wall paper



WALL
Panelling with feature wallpaper and metal trim highlights



KITCHENS FINISHING MATERIAL



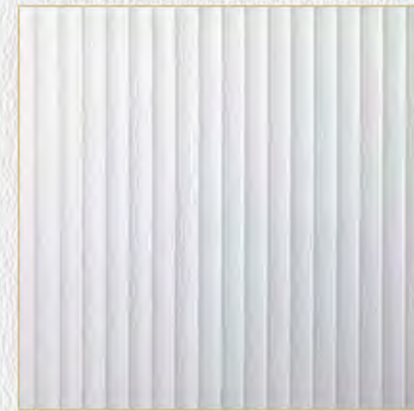
Appliances
Brand Electrolux or equivalent for built-in fridge, cooker, hob, hood and washing machine



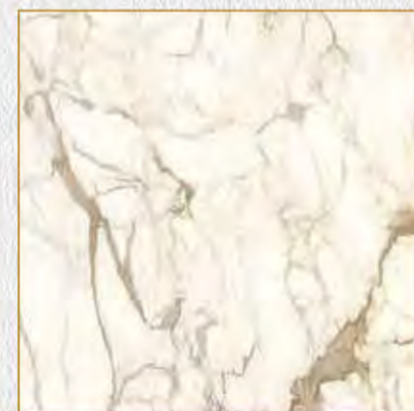
Fittings
Brand Newform or equivalent



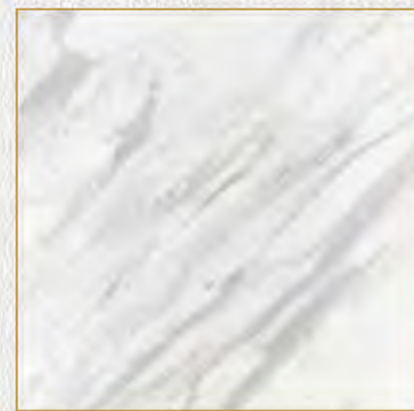
Joinery
Cupboards in white gloss timber veneer with metal trim highlights



Joinery
Fluted clear glass panels with metal trim highlights



Counter / Backsplash
Porcelain Machi Vecchia look or equivalent



Flooring
High end Volakas Marble or equivalent





TERRACES
FINISHING MATERIAL



cavalli

TOWER

DAMAC

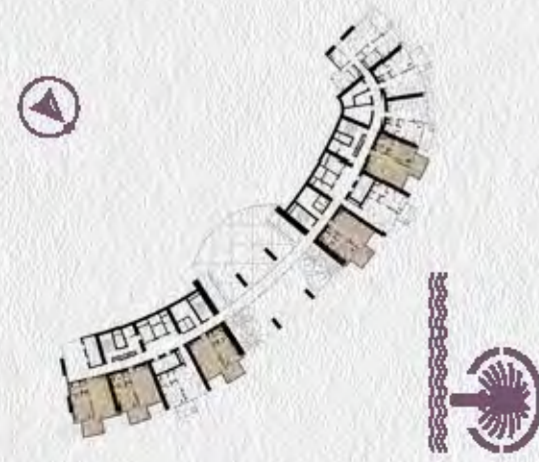
FLOOR PLANS

cavalli
TOWER

Luxury
FLOOR PLANS

LUXURY

1 BED TYPE A
LEVELS 04-08



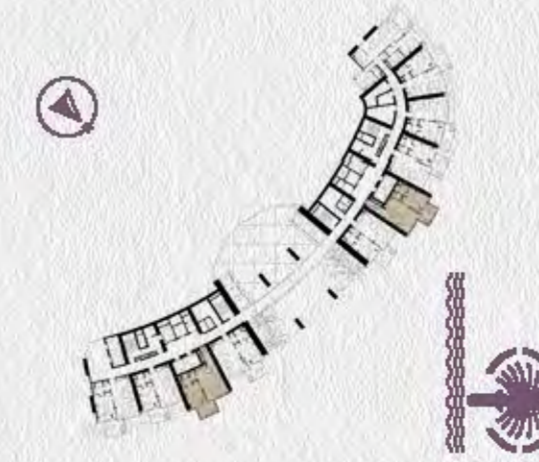
LEVELS 04-06



LEVELS 07-08

LUXURY

1 BED TYPE A2
LEVELS 04-08



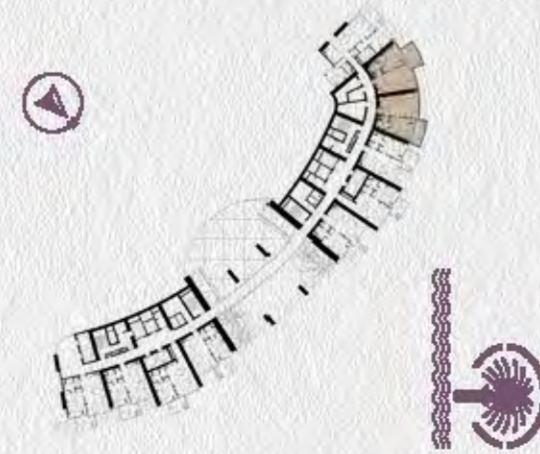
LEVELS 04-06



LEVELS 07-08

LUXURY

1 BED TYPE B
LEVELS 04-22 / 24-37



LEVELS 04-22 / 24-37

LUXURY

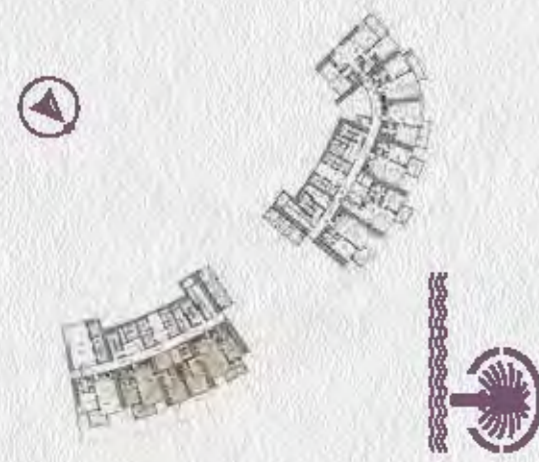
2 BED TYPE A1
LEVELS 9-22 / 31-37



LEVELS 9-22 / 31-37

LUXURY

2 BED TYPE A4
LEVELS 07-22 / 24-37



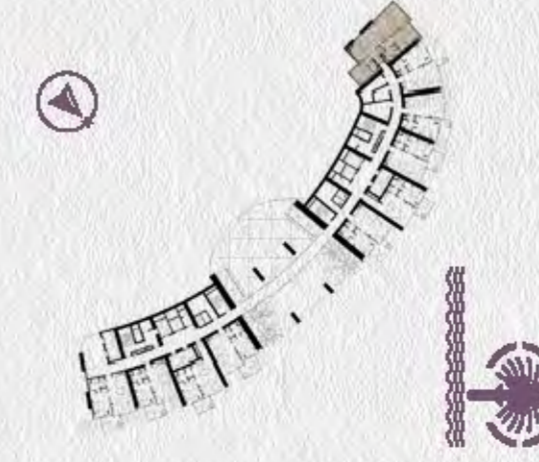
LEVELS 07-08



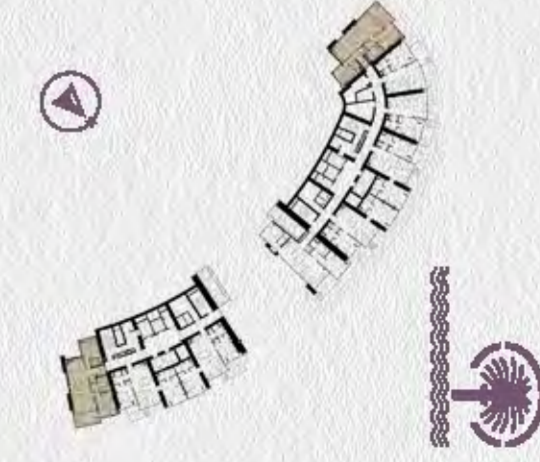
LEVELS 09-22 / 24-37

LUXURY

2 BED TYPE B
LEVELS 04-22



LEVELS 04-08



LEVELS 09-22

LUXURY

3 BED TYPE A
LEVELS 24-37



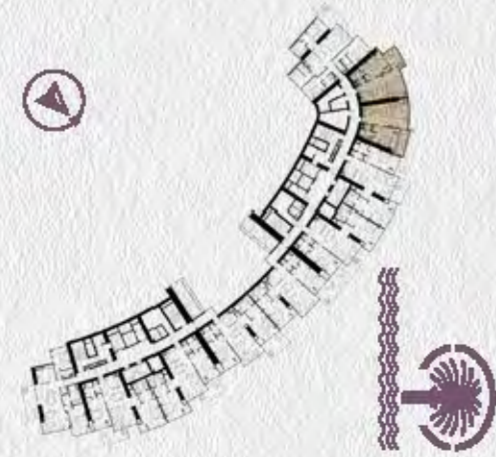
LEVELS 24-37

cavalli
TOWER

UPPER
Luxury
FLOOR PLANS

UPPER LUXURY

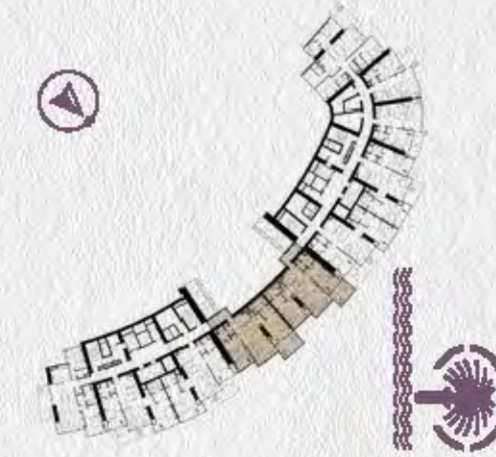
1 BED TYPE B
LEVELS 38-39



LEVELS 38-39

UPPER LUXURY

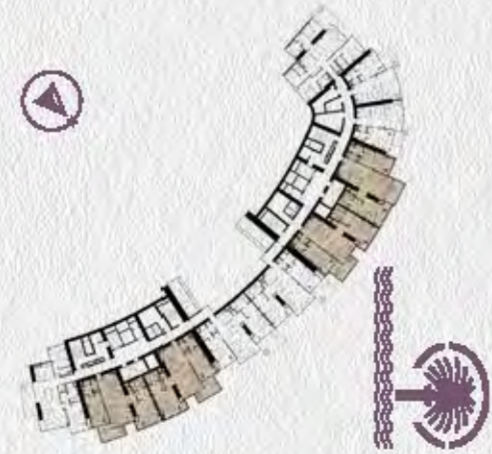
2 BED TYPE A1
LEVELS 38-39



LEVELS 38-39

UPPER LUXURY

2 BED TYPE A4
LEVELS 38-39



LEVELS 38-39

UPPER LUXURY

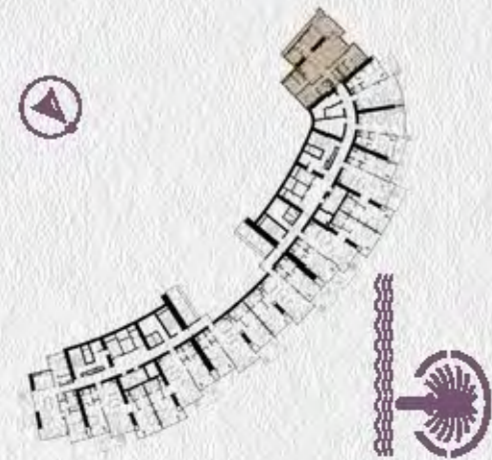
2 BED TYPE B
LEVELS 38-39



LEVELS 38-39

UPPER LUXURY

3 BED TYPE A
LEVELS 38-39



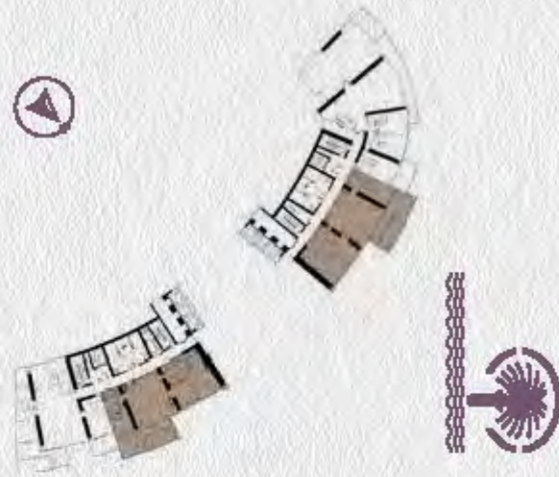
LEVELS 38-39

cavalli
TOWER

SUPER
Luxury
FLOOR PLANS

SUPER LUXURY

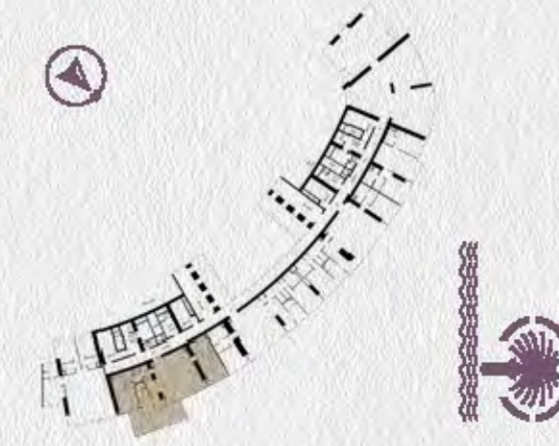
2 BED TYPE A1
LEVEL 67



LEVEL 67

SUPER LUXURY

2 BED TYPE A2
LEVELS 40,41



LEVELS 40-41

SUPER LUXURY

2 BED TYPE A3
LEVELS 42-47 & 67



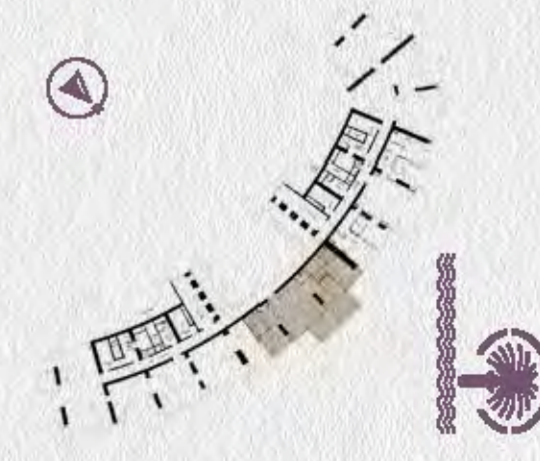
LEVELS 42-47, 67

SUPER LUXURY

2 BED TYPE A4
LEVELS 40,41,42



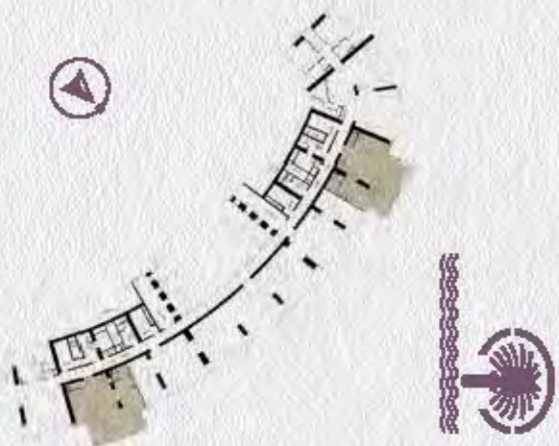
LEVELS 40-41



LEVELS 42

SUPER LUXURY

2 BED C DUPLEX LOWER
LEVELS 49,51,53,55,57



LEVELS 49,51,53,55,57

SUPER LUXURY

2 BED C DUPLEX UPPER
LEVELS 50,52,54,56,58



LEVELS 50,52,54,56,58

SUPER LUXURY

2 BED TYPE D DUPLEX LOWER
LEVEL 40



LEVEL 40

SUPER LUXURY

2 BED TYPE D DUPLEX UPPER
LEVEL 41



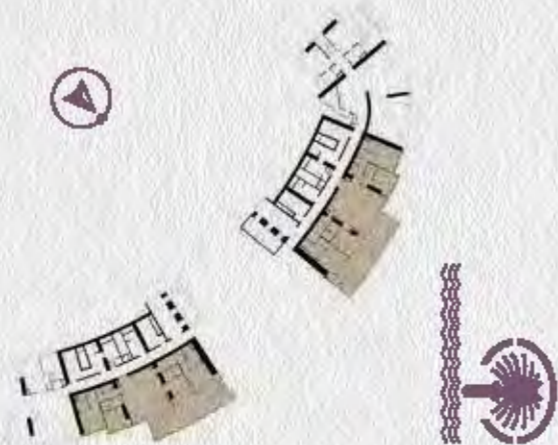
LEVEL 41

SUPER LUXURY

3 BED TYPE A1
LEVELS 42-47 & 59-66



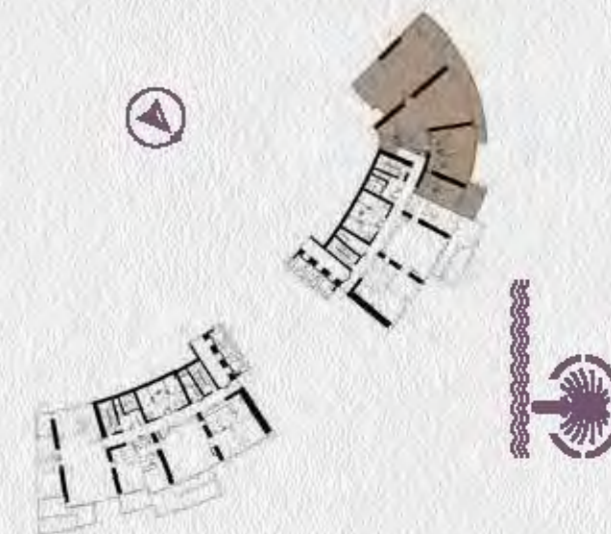
LEVELS 42-47



LEVELS 59-66

SUPER LUXURY

3 BED TYPE A2
LEVEL 67



LEVEL 67

SUPER LUXURY

3 BED TYPE A3
LEVELS 42-47



LEVELS 42-47



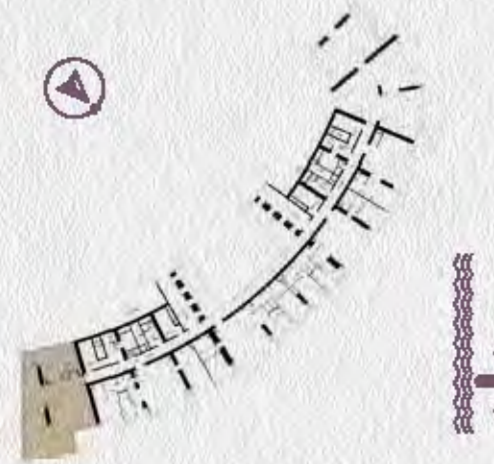
SUPER LUXURY

3 BED TYPE B DUPLEX LOWER
LEVELS 40,49,51,53,55,57,59,61,63,65

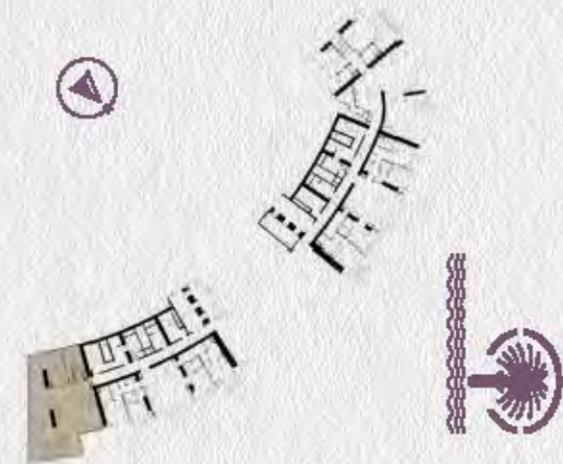


SUPER LUXURY

3 BED TYPE B DUPLEX UPPER
LEVELS 41,50,52,54,56,58,60,62,64,66



LEVELS 40,49,51,53,55,57



LEVELS 59,61,63,65



LEVELS 41,50,52,54,56,58



LEVELS 60,62,64,66

SUPER LUXURY

3 BED TYPE C DUPLEX LOWER
LEVELS 49,51,53,55,57



LEVELS 49,51,53,55,57

SUPER LUXURY

3 BED TYPE C DUPLEX UPPER
LEVELS 50,52,54,56,58



LEVELS 50,52,54,56,58

SUPER LUXURY

4 BED
LEVELS 40-47



LEVELS 40-47



SUPER LUXURY

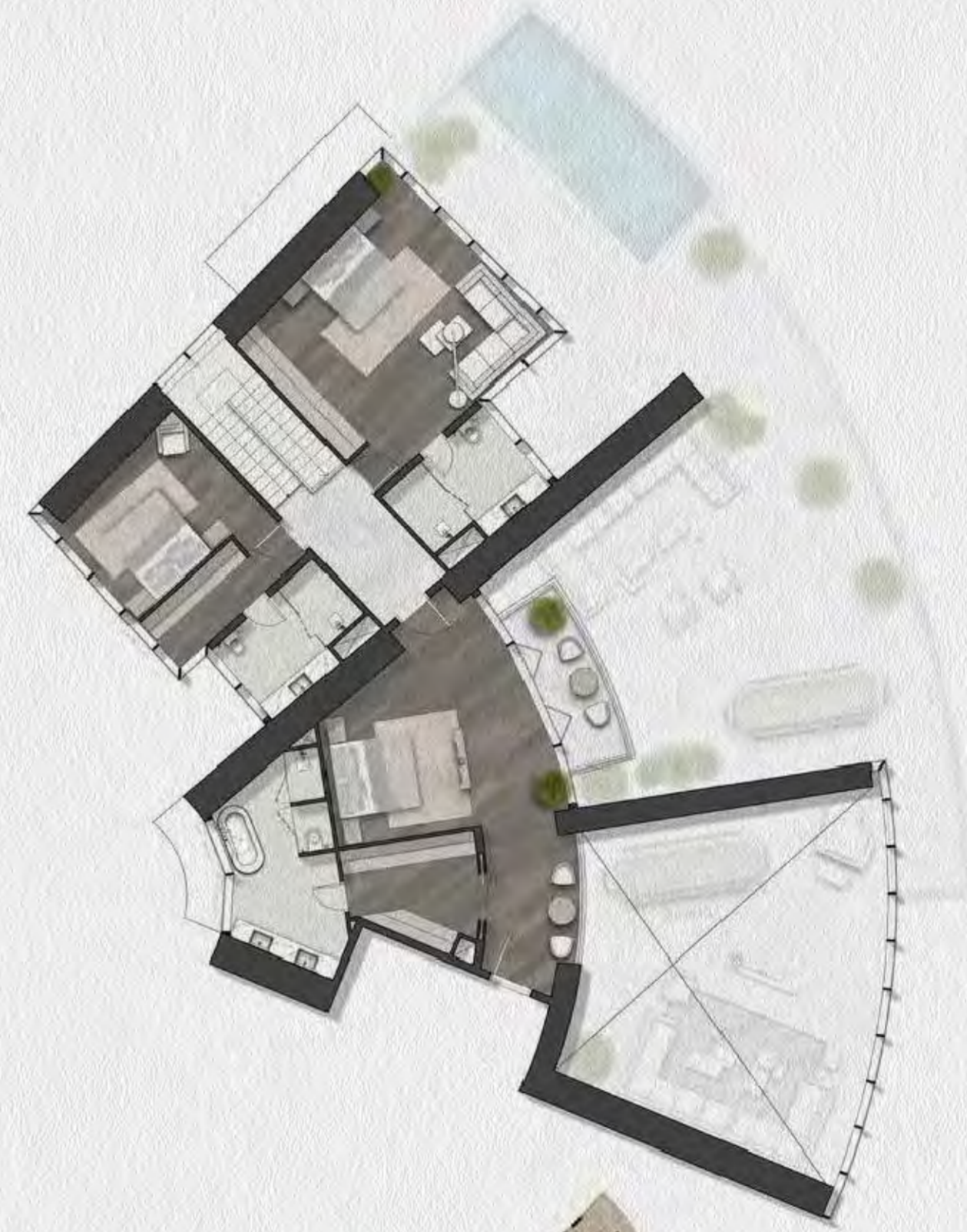
5 BED DUPLEX LOWER
LEVELS 49,51,53,55,57,59,61,63,65



LEVELS 49,51,53,55,57,59,61,63,65

SUPER LUXURY

5 BED DUPLEX UPPER
LEVELS 50,52,54,56,58,60,62,64,66



LEVELS 50,52,54,56,58,60,62,64,66

DAMAC PROPERTIES

LIVE THE LUXURY

DAMAC Properties has been at the forefront of the Middle East's luxury real estate market since 2002, delivering award-winning residential, commercial and leisure properties across the region, including the UAE, Saudi Arabia, Qatar, Jordan, Lebanon, Canada and Maldives, as well as the United Kingdom.

Since then, the Company has delivered close to 39,400 homes, with a development portfolio of more than 28,000 at various stages of planning and progress.* Joining forces with some of the world's most eminent fashion and lifestyle brands, DAMAC has brought new and exciting living concepts to the market in collaborations that include a golf course managed by The Trump Organization, and luxury homes in association with Versace, Fendi Casa, Just Cavalli, Paramount Hotels & Resorts, Rotana and Radisson Hotel Group.

With a consistent vision, and strong momentum, DAMAC Properties is building the next generation of Middle Eastern luxury living. DAMAC places a great emphasis on philanthropy and corporate social responsibility. As such, the Hussain Sajwani DAMAC Foundation, a joint initiative between DAMAC Group and its Chairman, Hussain Sajwani, is supporting the One Million Arab Coders Initiative. The programme was launched by Vice President and Prime Minister of the UAE, and Ruler of Dubai, His Highness Sheikh Mohammed bin Rashid Al Maktoum, and is focused on creating an empowered society through learning and skills development.

As at 31st December 2021

LUXURY BY APPOINTMENT

Contact us at any of our offices or visit damacproperties.com

UNITED ARAB EMIRATES

Dubai
Tel: 800-DAMAC (800-32622)
E-mail: dubai@damacgroup.com

Park Towers - Sales Centre,
Dubai International Financial Centre

Aykon City - Sales Centre,
Floor 63, Sheikh Zayed Road

DAMAC Hills - Sales Centre,
Sheikh Zayed bin Hamdan Al Nahyan Street

Damac Hills - Sales Centre,
Golf Veduta, Townhouse TH2

DAMAC Hills - Sales Centre,
Bellavista, Carson Building

DAMAC Hills 2 - Sales Centre,
Amazonia Cluster, Villa 333

DAMAC Hills 2 - Sales Centre,
Water Town

QATAR

Building 90, New Solta Area
Ali bin Abi Talib Street
Next to Omar bin Al Khattab Health Centre
Tel: +974 44 666 986
Fax: +974 44 554 576
E-mail: doha@damacgroup.com

KINGDOM OF SAUDI ARABIA

Riyadh
DAMAC Towers Riyadh
South Tower
Olaya District
King Fahd Road
PO Box 102460
Tel: +966 11 835 0300
E-mail: ksa@damacgroup.com

TURKEY

Levazım, Mah. Koru Sk. Zorlu Center No: 2
Ic Kapi No: 347 Beşiktaş/İstanbul, Turkey
Tel: +90 212 892 0327
Fax: +90 212 890 7184
E-mail: turkey.office@damacgroup.com

LEBANON

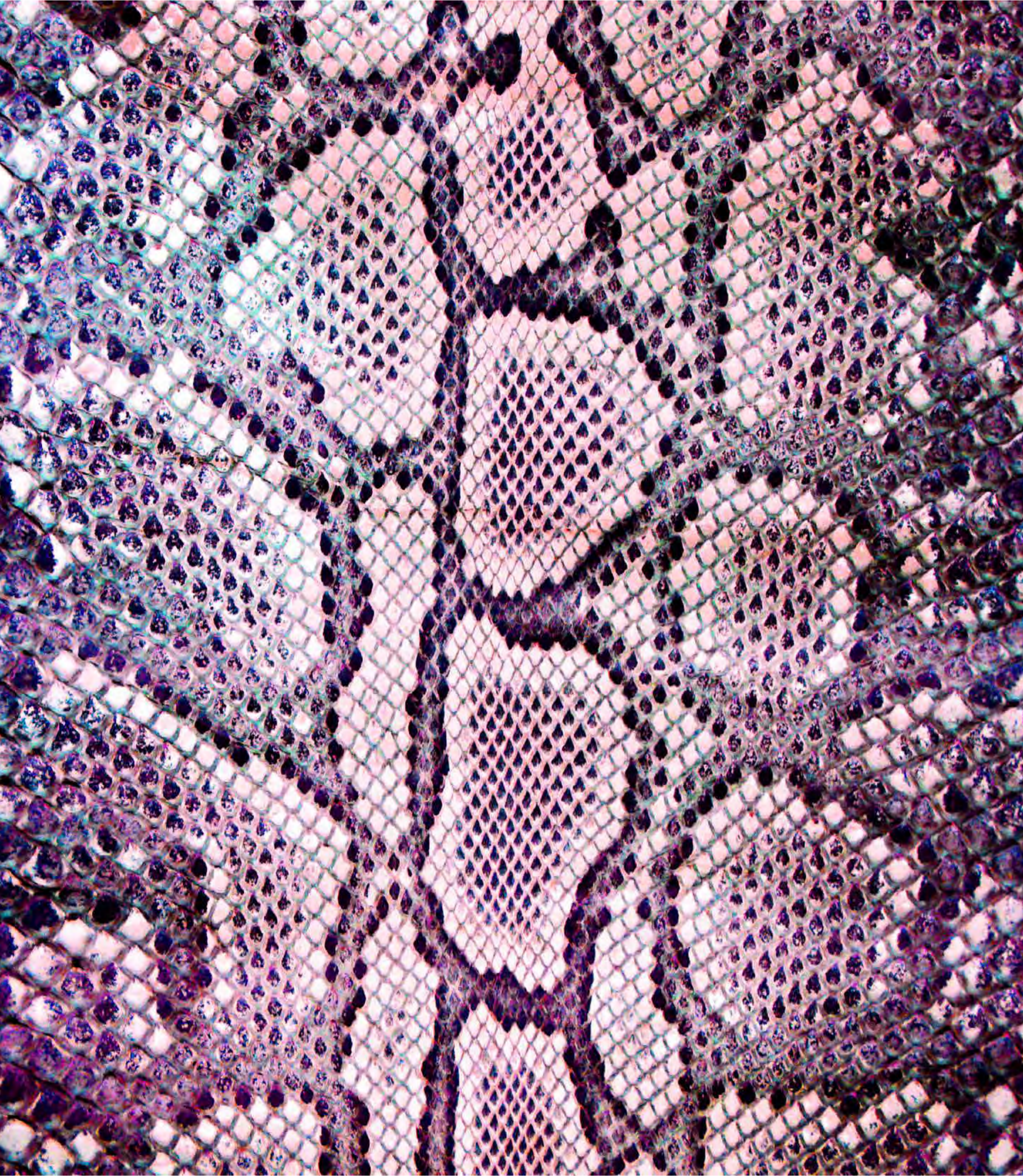
Unit 1801, 18th Floor
DAMAC Tower
Omar Daouk Street
Mina El Hosn, Beirut Central District
Tel: +961 81 647 200
E-mail: beirut@damacgroup.com

JORDAN

Al Istithmar Street
Abdali Project
Amman
Opposite Abdali Mall Gate #1
Tel: +962 6 510 7000
Fax: +962 6 565 7896
E-mail: amman@damacgroup.com

UNITED KINGDOM

4th Floor, 100 Brompton Road
Opposite Harrods
Knightsbridge, London
SW3 1ER, United Kingdom
Tel: +44 (0) 207 590 8050
E-mail: sales@damactower.co.uk



DAMAC