



THE
PRESTIGE COLLECTION

FLOORS 40 - 61

DAMAC



T H E N A T U R E O F L U X U R Y

LUXURY

S A F A O N E

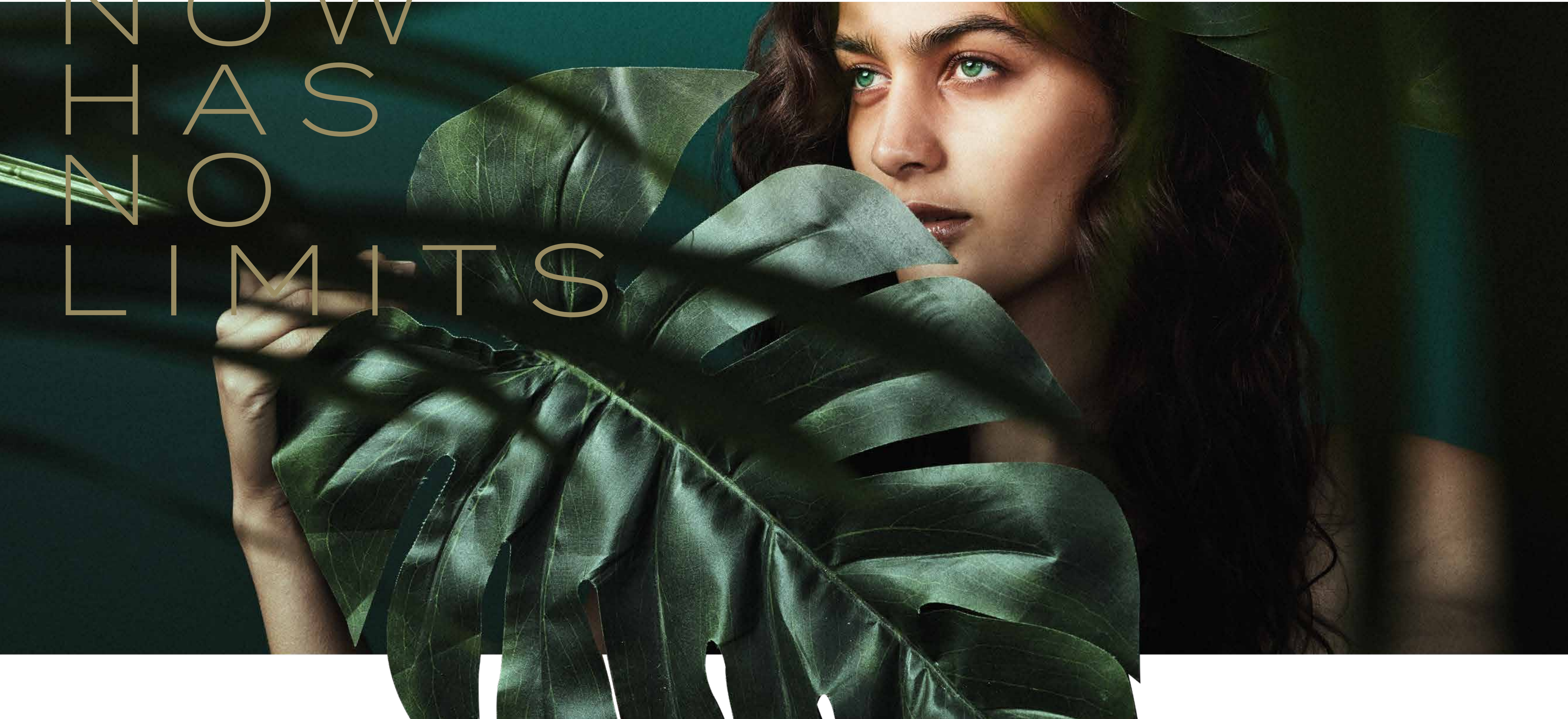
THE PRESTIGE COLLECTION

NOW

HAS

NO

LIMITS



WELCOME TO A PLACE THAT REDEFINES
THE PARAMETERS OF LUXURY.

Where the line between the opulence of nature and the elegance of home is blurred, and life is lived amid the emerald brilliance of shade-casting trees, tropical plants in bloom, and the bedazzlement of the world's rarest jewels.

Welcome to Safa One.



Y
R
U
X
J
L
F
O
E
U
T
A
N
E
T
H



LUXURY
IS
FLAWLESS

S A F A O N E

T H E P R E S T I G E C O L L E C T I O N



SAFA ONE IS EXCLUSIVELY BRANDED
BY DE GRISOGONO OF SWITZERLAND.

It takes its inspiration from the abundance of emeralds
and diamonds only to be found in the master-jeweler's
most celebrated pieces.

The magnificence of gemstones is reflected throughout
the building, where exquisite greens and sparkling
facades surround you with flawless splendor.



LUXURY
IS NATURE
UNBOUND

THE NATURALITY OF LUXURY



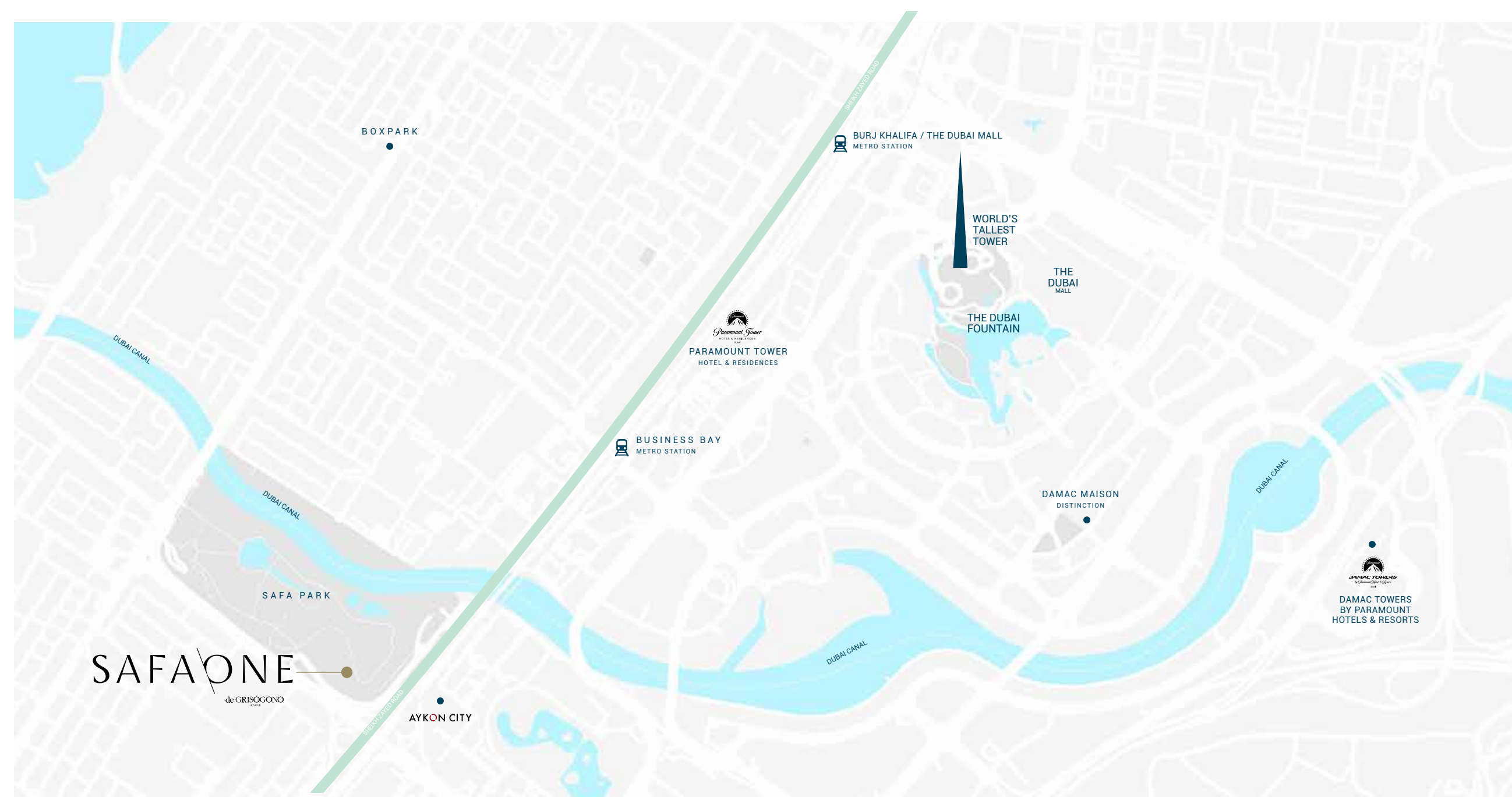
WITNESS NATURE BREAK THE CONFINES OF SAFA PARK AND CAST ITS SPELL UPON SAFA ONE.

Stroll between the Podium's exotic trees and flowers before casting your gaze towards Safa One's two towers, where enchanted gardens ascend the building like a necklace of jade, strung from the sky.

Y
R
J
X
J
L
E
O
F
E
R
J
T
A
N
E
T
H

LUXURY IS A
LOCATION
LIKE NO OTHER





LIVE IN THE HEART OF THE CITY,
WITH YOUR FINGER ON THE PULSE OF NOW.

Safa One's central location allows you to gaze upon sweeping views of Safa Park, World Islands and Bulgari Island from one side, and breathtaking vistas towards Burj Al Arab, Palm Jumeirah and Atlantis on the other.



LUXURY IS
THE WORLD'S
MOST
NATURAL
WELCOME


Le GRISOGONO
GENEVE

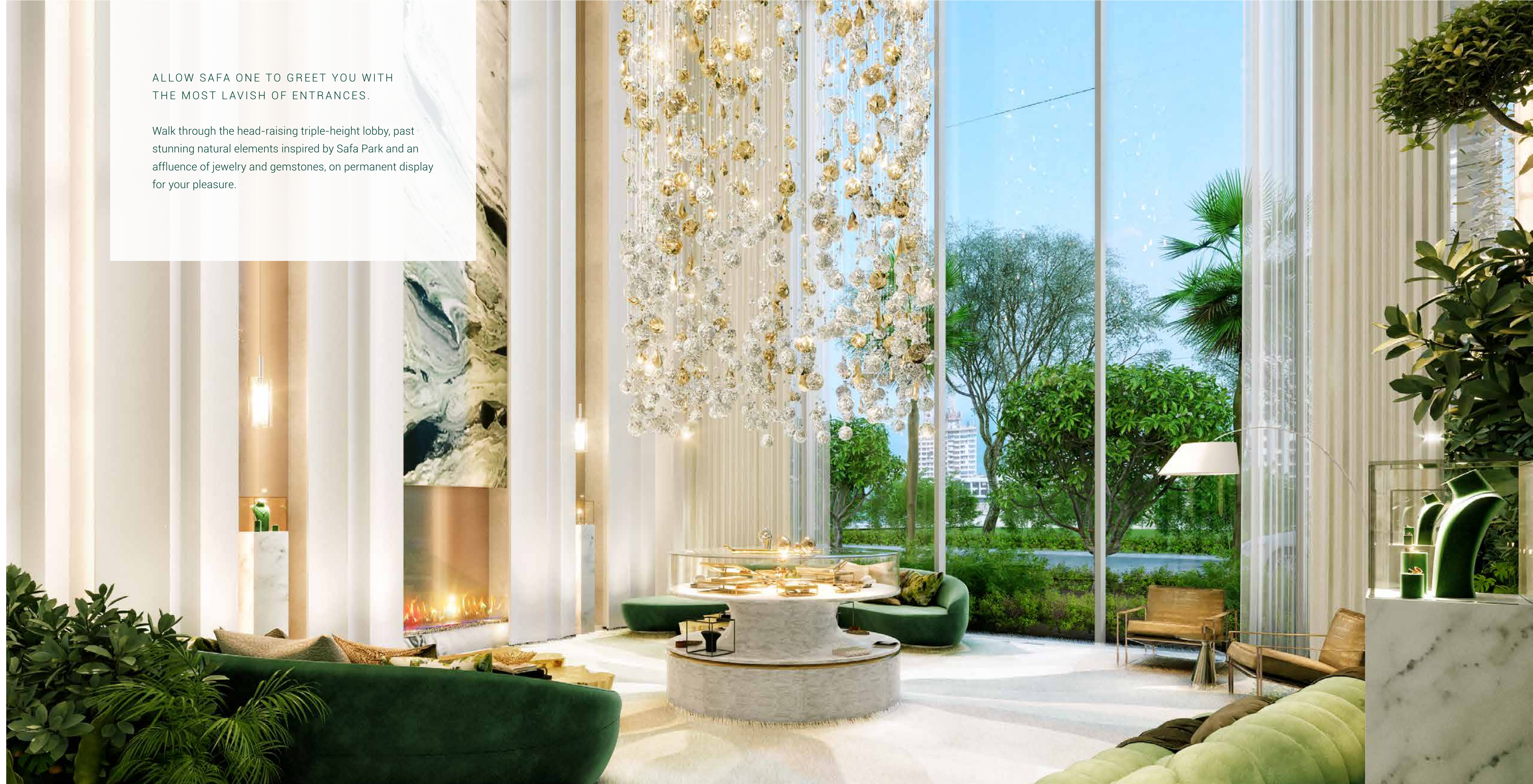
L
U
X
U
R
Y
I
S
T
H
E
M
O
S
T
N
A
T
U
R
A
L
W
E
L
C
O
M
E

S A F A O N E

T H E P R E S T I G E C O L L E C T I O N

ALLOW SAFA ONE TO GREET YOU WITH
THE MOST LAVISH OF ENTRANCES.

Walk through the head-raising triple-height lobby, past
stunning natural elements inspired by Safa Park and an
affluence of jewelry and gemstones, on permanent display
for your pleasure.



Y
R
J
L
O
E
U
T
A
N
E
T
H

LUXURY IS
EVERYTHING
YOU NEED



S A F A O N E

T H E P R E S T I G E C O L L E C T I O N



AT SAFA ONE, YOUR HEART'S DESIRE
IS CATERED FOR.

Luxuriate in our pampering spa, hone your body at
our fully-equipped gym, unwind after your workout at
our exclusive club house, and put the fine in dine with
a mouthwatering array of cafes and restaurants,
all located within the building.

LUXURY BRINGS
THE BEACH TO
YOUR DOOR

S A F A O N E

T H E P R E S T I G E C O L L E C T I O N



WAVE HELLO TO THE INCREDIBLE.

Safa One offers you two unique beach pools, complete with golden sands. Ease your way into glorious temperature-controlled waters and wade to the edge of infinity. The horizons of our pools come to an end, only for your view of the sea to begin.



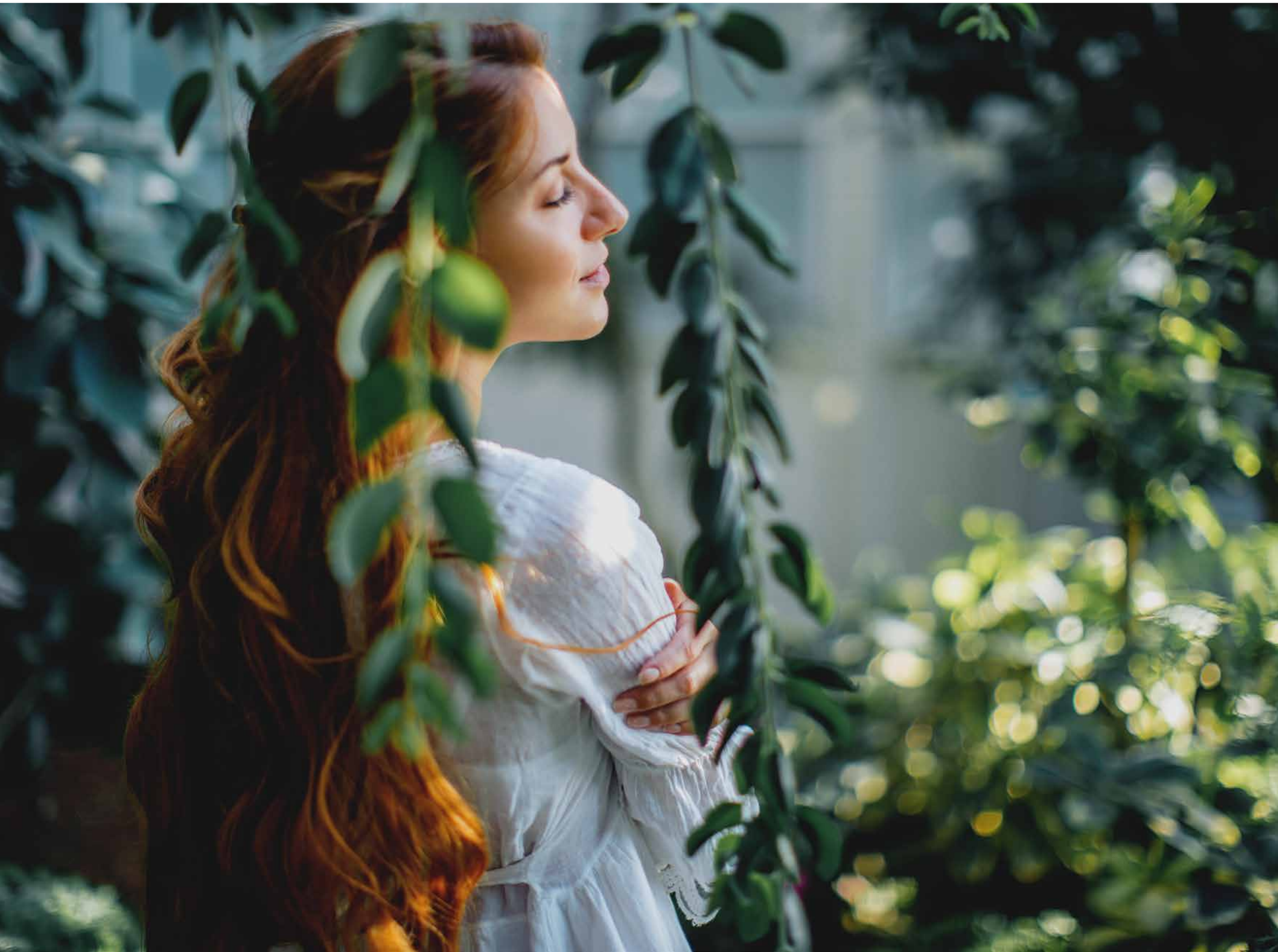
Y
R
U
L
U
L
U
X
U
R
Y
O
F
O
E
R
T
H
A
N
T
H
E

LUXURY IS
THE HIGHEST
TROPICAL ISLAND
ON EARTH



S A F A O N E

T H E P R E S T I G E C O L L E C T I O N



THE CROWNING GLORY.

An unprecedented rooftop ecosystem.
A gravity-defying island perched above the clouds.

This stunning, self-contained architectural treasure is 32 meters high and graced by manicured landscapes, birds on the wing and an elegant selection of cafes and restaurants. Its state-of-the-art climate-control system allows it to produce tropical rain at select moments of the day, offering you an experience found nowhere else on Earth.

LUXURY
IS YOURS
TO OWN

T H E
N A T U R E
O F
L U X U R Y



S A F A O N E

T H E P R E S T I G E C O L L E C T I O N



A LUXURY ONLY
THE FEW WILL KNOW.

Only 31 people in the world will be able to claim that they own a part of Safa One's Prestige Collection.

S A F A O N E

T H E P R E S T I G E C O L L E C T I O N

TURN OPULENCE INTO YOUR ADDRESS.

These exclusive duplexes come equipped with private infinity pools, intricately crafted interiors and a view that will never fail to stun.





S A F A O N E
T H E P R E S T I G E C O L L E C T I O N



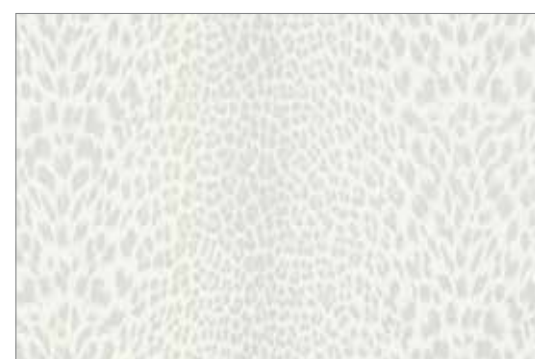
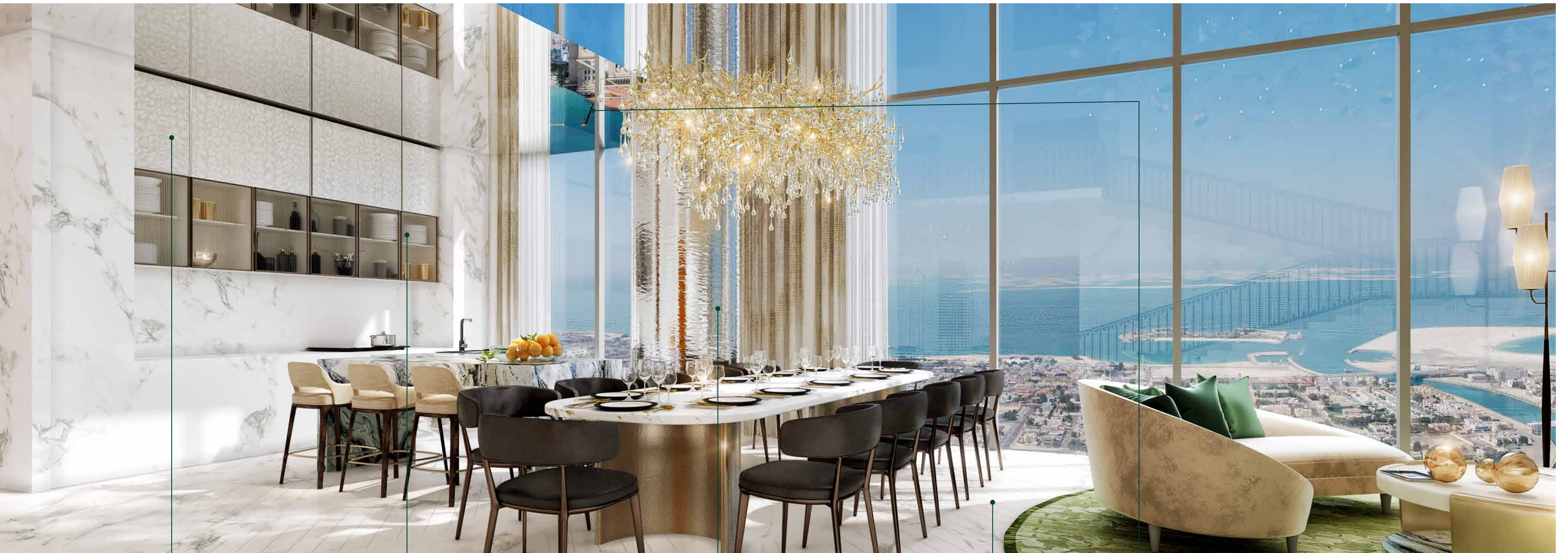


S A F A O N E

T H E P R E S T I G E C O L L E C T I O N







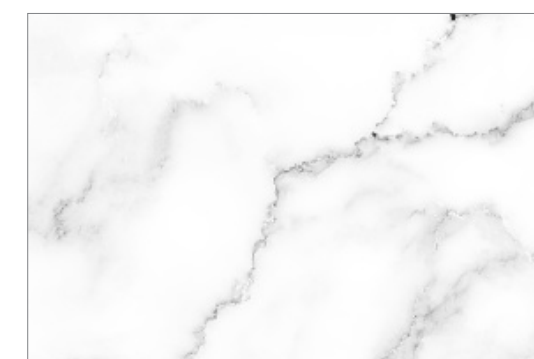
JOINERY: CUPBOARD IN WHITE GLOSS TIMBER VENEER WITH METAL TRIM HIGHLIGHTS



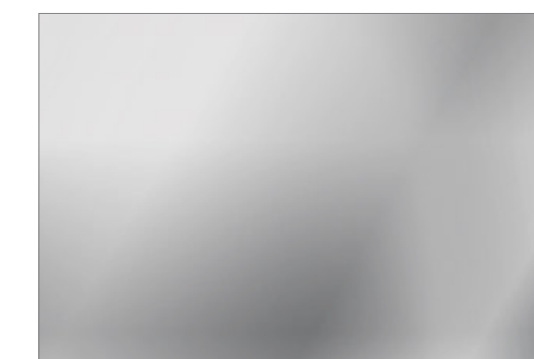
JOINERY: FLUTED CLEAR GLASS PANELS WITH METAL TRIM HIGHLIGHTS



RIPPLE-EFFECT METAL PANEL | COLUMNS



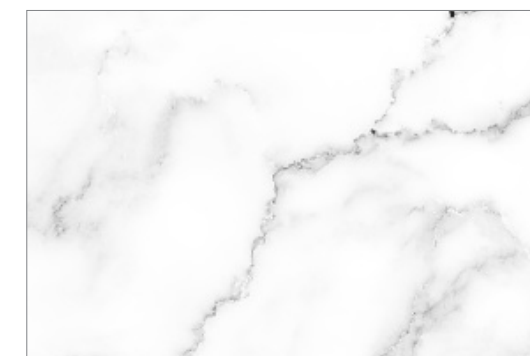
GENERAL FLOOR & KITCHEN: HIGH END VOLAKAS MARBLE OR EQUIVALENT



CLEAR MIRROR | CEILING



HAIRLINE GOLD STAINLESS STEEL | METAL TRIM HIGHLIGHTS



GENERAL FLOOR: HIGH
END VOLAKAS MARBLE
OR EQUIVALENT



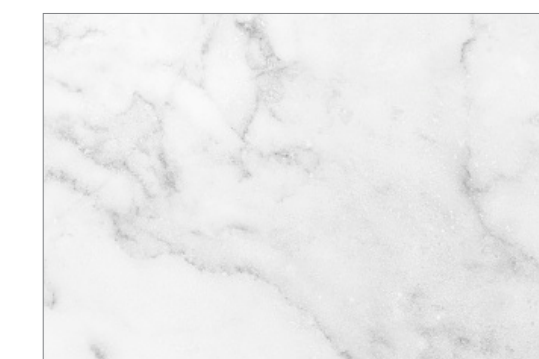
HAIRLINE GOLD
STAINLESS STEEL |
METAL SCREEN



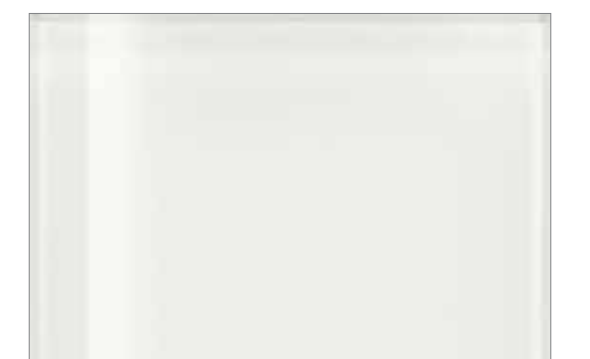
NATURAL OAK VENEER |
LIVING MILLWORK



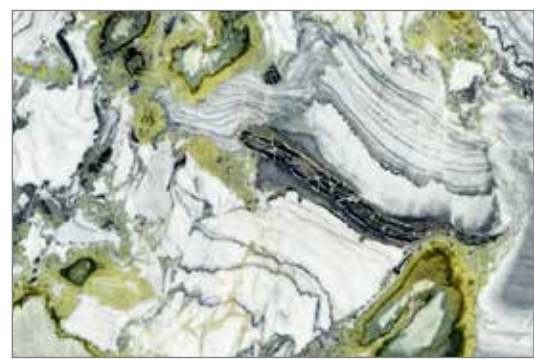
HAIRLINE GOLD
STAINLESS STEEL
METAL TRIMS



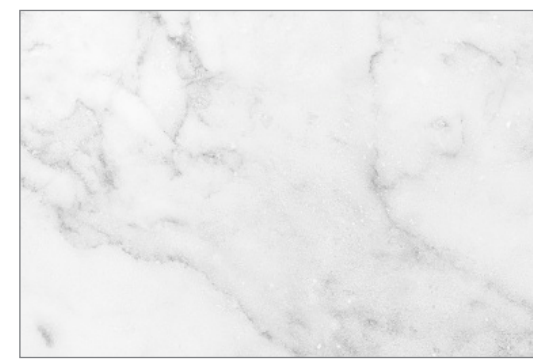
GENERAL FLOOR: HIGH
END VOLAKAS MARBLE
OR EQUIVALENT



BEDROOM FEATRE
WALLS: WHITE GLOSSY
LACQUER PANEL|



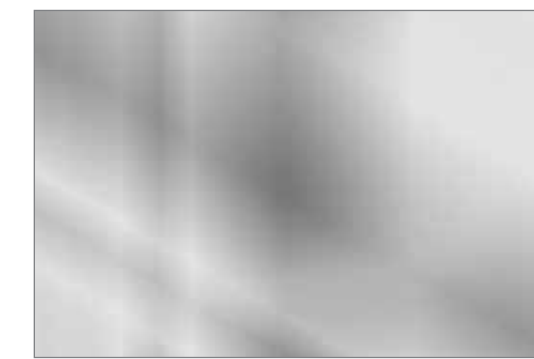
TOP OF VANITY
JADE GREEN MARBLE
OR EQUIVALENT



GENERAL FLOOR: HIGH
END VOLAKAS MARBLE
OR EQUIVALENT



HAIRLINE GOLD
STAINLESS STEEL
METAL TRIMS



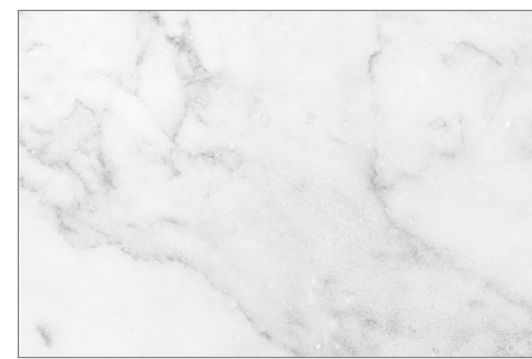
WARDROBES:
CLEAR MIRROR



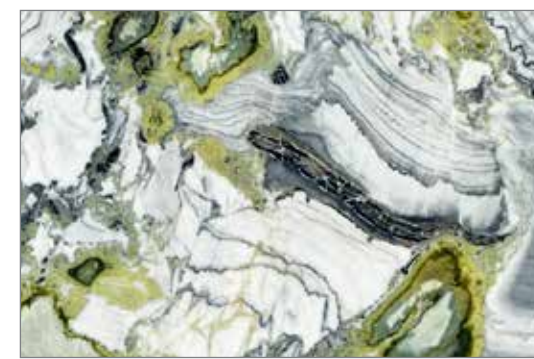
WHITE MOCK CROC
LEATHER | ACCENT
PANELS @ WALK-IN
CLOSET



BATHROOM DOORS & PARTITION: FLUTED GLASS LEAVES



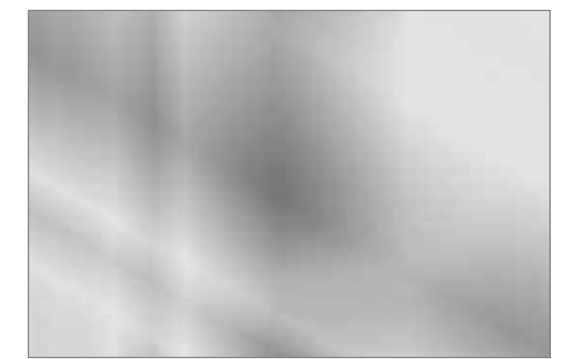
GENERAL FLOOR: HIGH END VOLAKAS MARBLE OR EQUIVALENT



VANITY: ICE JADE GREEN MARBLE OR EQUIVALENT



HAIRLINE GOLD STAINLESS STEEL METAL TRIMS



FEATURE WALL: CLEAR MIRROR

SAFAONE
de GRISOGONO
GENÈVE



FLOOR PLANS

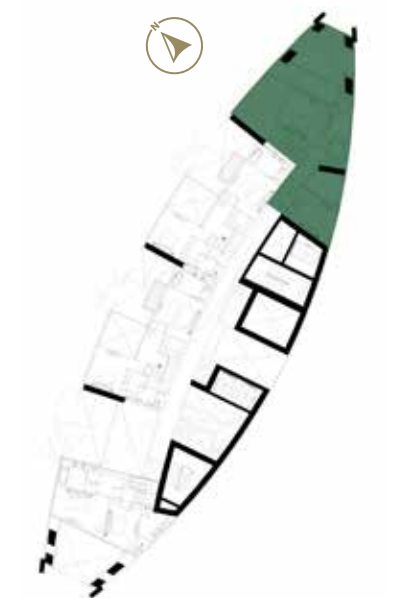
2 BEDROOM DUPLEX

TOWER-A | TYPE-A
LOWER FLOOR
LEVELS 40 - 42 - 44 - 46



2 BEDROOM DUPLEX

TOWER-A | TYPE-A
UPPER FLOOR
LEVELS 41 - 43 - 45 - 47



SAFAONE
de GRISOGONO
GENÈVE

THE PRESTIGE COLLECTION

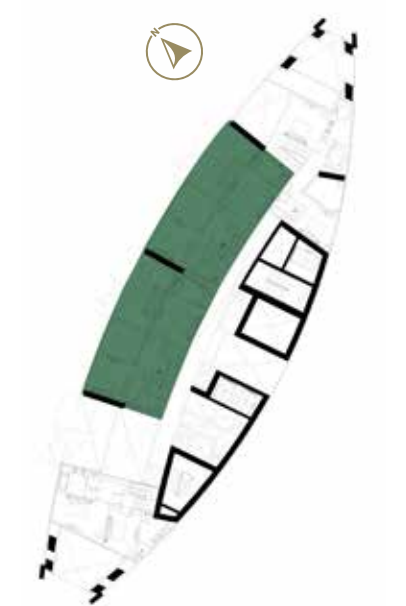
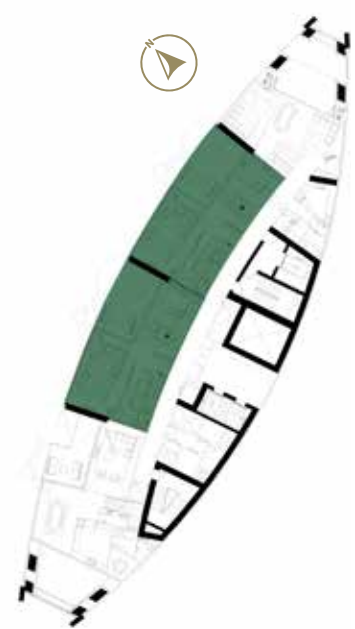
2 BEDROOM DUPLEX

TOWER-A | TYPE-B
LOWER FLOOR
LEVELS 40 - 42 - 44 - 46



2 BEDROOM DUPLEX

TOWER-A | TYPE-B
UPPER FLOOR
LEVELS 41 - 43 - 45 - 47



SAFAONE
de GRISOGONO
GENÈVE

THE PRESTIGE COLLECTION

2 BEDROOM DUPLEX

TOWER-A | TYPE-C

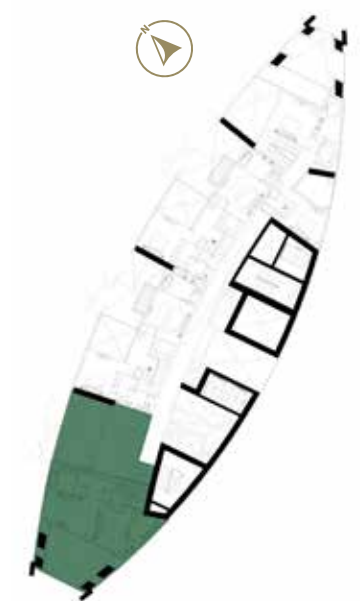
LOWER FLOOR
LEVELS 40 - 42



2 BEDROOM DUPLEX

TOWER-A | TYPE-C

UPPER FLOOR
LEVELS 41 - 43



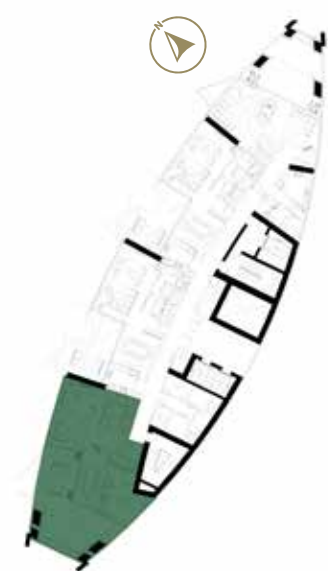
SAFAONE
de GRISOGONO
GENÈVE

THE PRESTIGE COLLECTION

2 BEDROOM DUPLEX

TOWER-A | TYPE-D

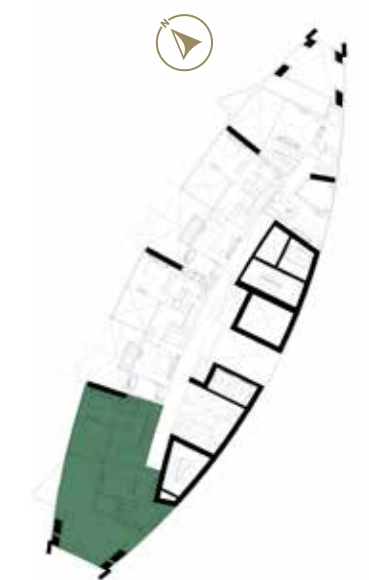
LOWER FLOOR
LEVELS 44 - 46



2 BEDROOM DUPLEX

TOWER-A | TYPE-D

UPPER FLOOR
LEVELS 45 - 47



SAFAONE
de GRISOGONO
GENÈVE

THE PRESTIGE COLLECTION

3 BEDROOM DUPLEX

TOWER-A | TYPE-A
LOWER FLOOR
LEVELS 48 - 50 - 52



3 BEDROOM DUPLEX

TOWER-A | TYPE-A
UPPER FLOOR
LEVELS 49 - 51 - 53



SAFAONE
de GRISOGONO
GENÈVE

THE PRESTIGE COLLECTION

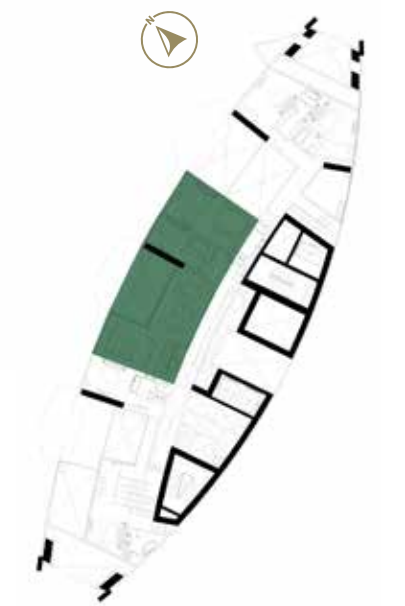
3 BEDROOM DUPLEX

TOWER-A | TYPE-B
LOWER FLOOR
LEVELS 48 - 50 - 52



3 BEDROOM DUPLEX

TOWER-A | TYPE-B
UPPER FLOOR
LEVELS 49 - 51 - 53



SAFAONE
de GRISOGONO
GENÈVE

THE PRESTIGE COLLECTION

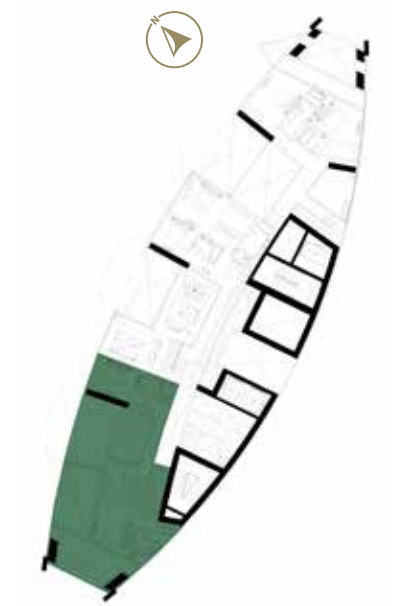
3 BEDROOM DUPLEX

TOWER-A | TYPE-C
LOWER FLOOR
LEVELS 48 - 50 - 52



3 BEDROOM DUPLEX

TOWER-A | TYPE-C
UPPER FLOOR
LEVELS 49 - 51 - 53



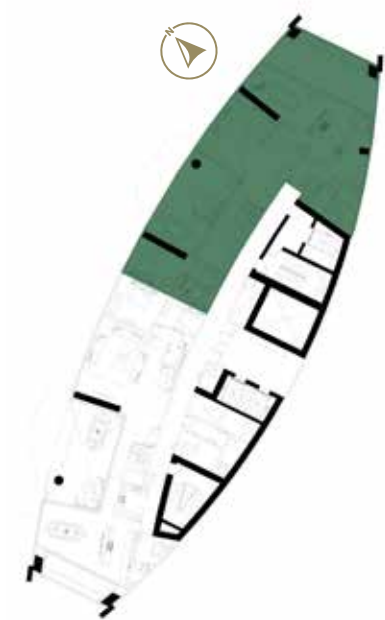
SAFAONE
de GRISOGONO
GENÈVE

THE PRESTIGE COLLECTION

4 BEDROOM DUPLEX

TOWER-A | TYPE-A

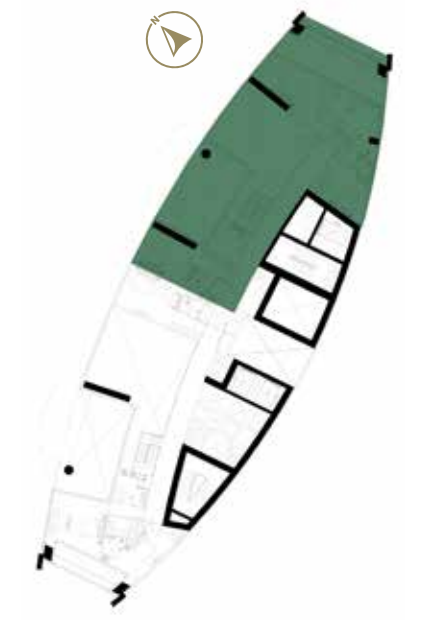
LOWER FLOOR
LEVELS 54 - 56



4 BEDROOM DUPLEX

TOWER-A | TYPE-A

UPPER FLOOR
LEVELS 55 - 57



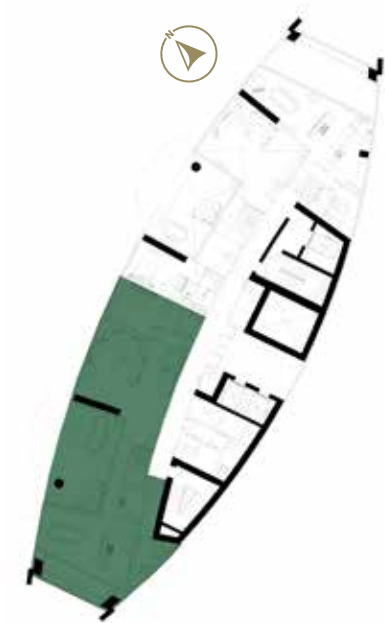
SAFAONE
de GRISOGONO
GENÈVE

THE PRESTIGE COLLECTION

4 BEDROOM DUPLEX

TOWER-A | TYPE-B

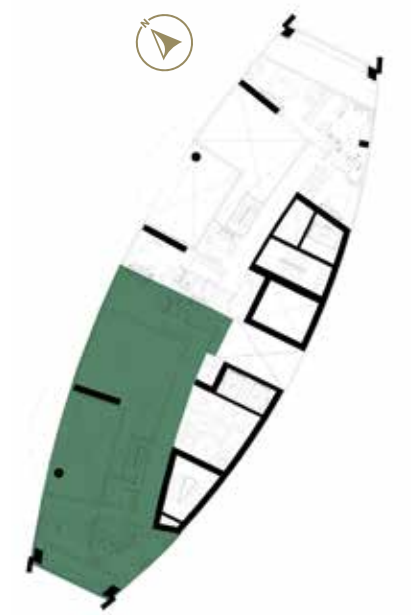
LOWER FLOOR
LEVELS 54 - 56



4 BEDROOM DUPLEX

TOWER-A | TYPE-B

UPPER FLOOR
LEVELS 55 - 57



SAFAONE
de GRISOGONO
GENÈVE

THE PRESTIGE COLLECTION

DAMAC PROPERTIES

LIVE THE LUXURY

DAMAC Properties has been at the forefront of the Middle East's luxury real estate market since 2002, delivering award-winning residential, commercial and leisure properties across the region, including the UAE, Saudi Arabia, Qatar, Jordan, Lebanon, Canada and Maldives, as well as the United Kingdom.

Since then, the Company has delivered close to 39,400 homes, with a development portfolio of more than 28,000 at various stages of planning and progress.* Joining forces with some of the world's most eminent fashion and lifestyle brands, DAMAC has brought new and exciting living concepts to the market in collaborations that include a golf course managed by The Trump Organization, and luxury homes in association with Versace, Fendi Casa, Just Cavalli, de Grisogono, Paramount Hotels & Resorts, Rotana and Radisson Hotel Group.

With a consistent vision, and strong momentum, DAMAC Properties is building the next generation of Middle Eastern luxury living. DAMAC places a great emphasis on philanthropy and corporate social responsibility. As such, the Hussain Sajwani DAMAC Foundation, a joint initiative between DAMAC Group and its Chairman, Hussain Sajwani, is supporting the One Million Arab Coders Initiative. The programme was launched by Vice President and Prime Minister of the UAE, and Ruler of Dubai, His Highness Sheikh Mohammed bin Rashid Al Maktoum, and is focused on creating an empowered society through learning and skills development.

**As of 31st December 2021.*

LUXURY BY APPOINTMENT

CONTACT US AT ANY OF OUR OFFICES OR VISIT [DAMACPROPERTIES.COM](https://damacproperties.com)

UNITED ARAB EMIRATES

Dubai
Tel: 800-DAMAC (800-32622)
E-mail: dubai@damacgroup.com

Park Towers - Sales Centre,
Dubai International Financial Centre

Aykon City - Sales Centre,
Floor 63, Sheikh Zayed Road

DAMAC Hills - Sales Centre,
Sheikh Zayed bin Hamdan Al Nahyan
Street

Damac Hills - Sales Centre,
Golf Veduta, Townhouse TH2

DAMAC Hills - Sales Centre,
Bellavista, Carson Building

DAMAC Hills 2 - Sales Centre,
Amazonia Cluster, Villa 333

DAMAC Hills 2 - Sales Centre,
Water Town

QATAR

Building 90, New Solta Area
Ali bin Abi Talib Street
Next to Omar bin Al Khattab Health Centre
Tel: +974 44 666 986
Fax: +974 44 554 576
E-mail: doha@damacgroup.com

KINGDOM OF SAUDI ARABIA

Riyadh
DAMAC Towers Riyadh
South Tower
Olaya District
King Fahd Road
PO Box 102460
Tel: +966 11 835 0300
E-mail: ksa@damacgroup.com

TURKEY

Levazım, Mah. Koru Sk. Zorlu Center No: 2
Ic Kapi No: 347 Beşiktaş/İstanbul, Turkey
Tel: +90 212 892 0327
Fax: +90 212 890 7184
E-mail: turkey.office@damacgroup.com

LEBANON

Unit 1801, 18th Floor
DAMAC Tower
Omar Daouk Street
Mina El Hosn, Beirut Central District
Tel: +961 81 647 200
E-mail: beirut@damacgroup.com

JORDAN

Al Istithmar Street
Abdali Project
Amman
Opposite Abdali Mall Gate #1
Tel: +962 6 510 7000
Fax: +962 6 565 7896
E-mail: amman@damacgroup.com

UNITED KINGDOM

4th Floor, 100 Brompton Road
Opposite Harrods
Knightsbridge, London
SW3 1ER, United Kingdom
Tel: +44 (0) 207 590 8050
E-mail: sales@damactower.co.uk



